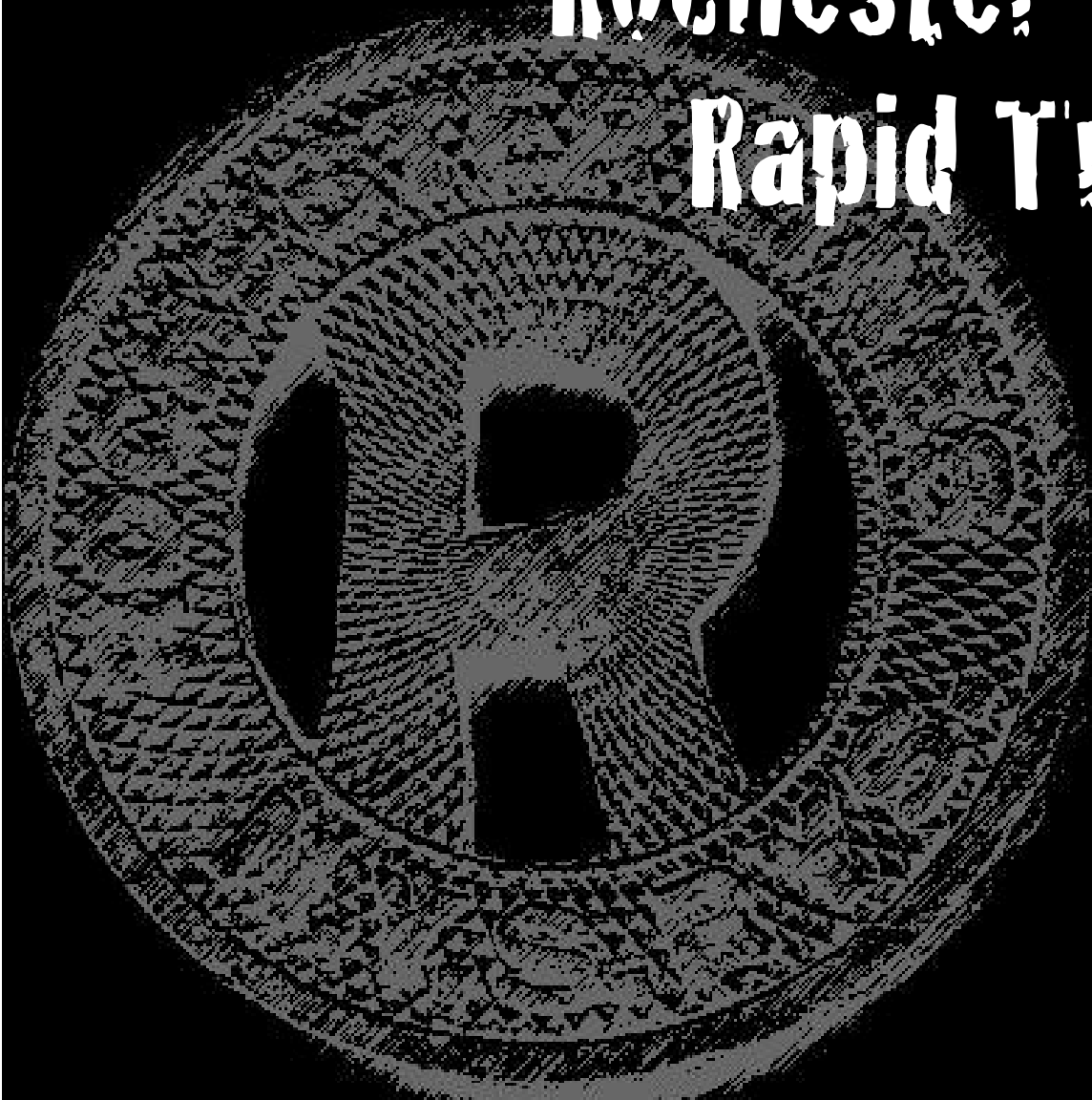


Rochester Industrial and Rapid Transit Railway

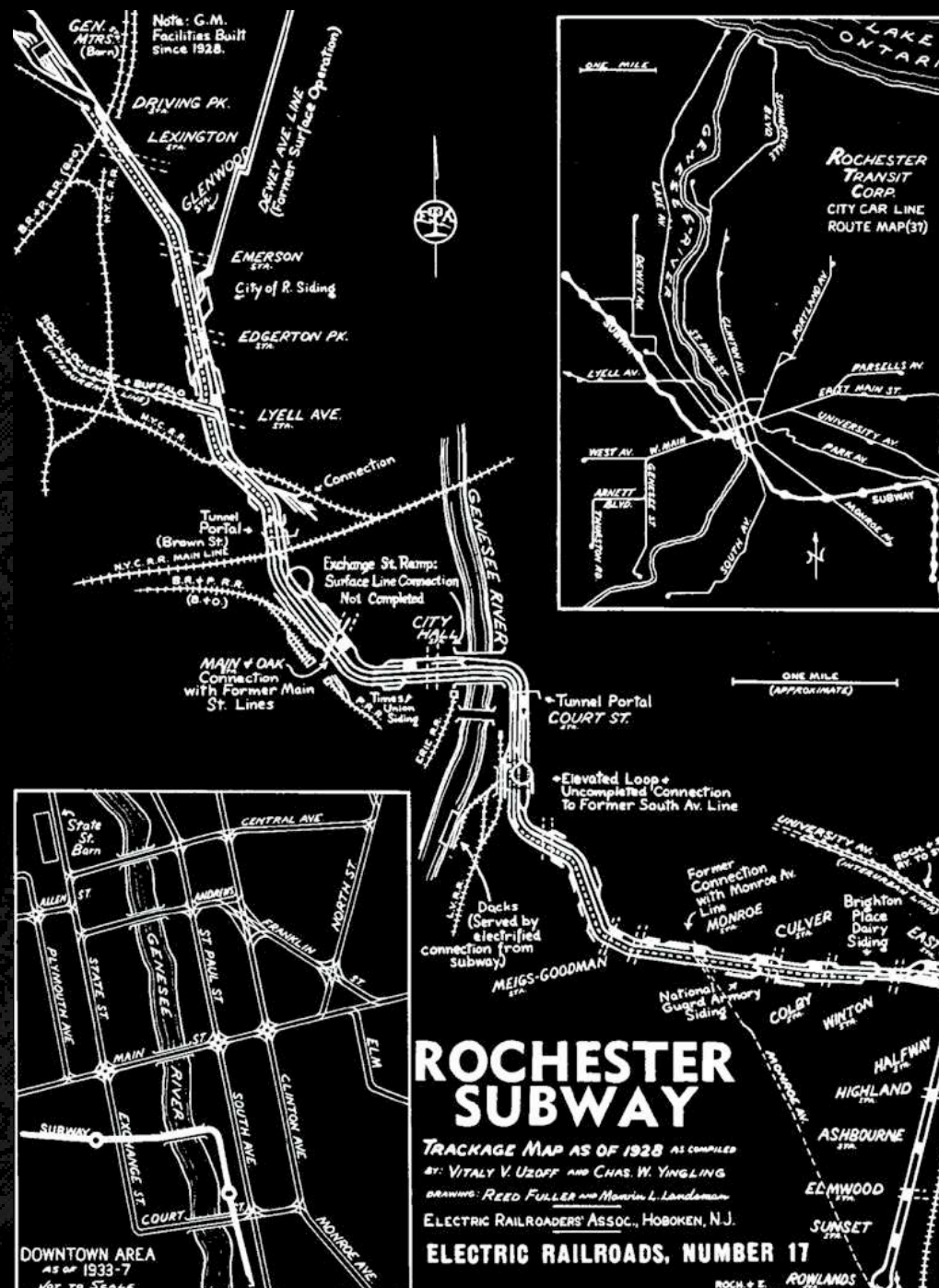
**Preservation, Park and
Museum Proposal**



From Rowlands NY to General Motors Plant

1927-1956

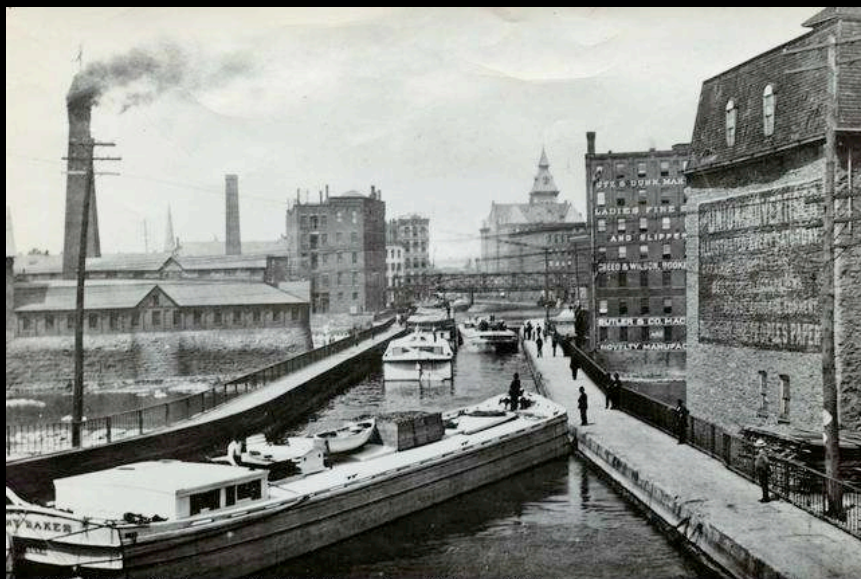
Image From: <http://rocwiki.org/>



Brief History

1927-1956

- Single car Light Rail System
- Built on the old Erie Canal Bed
- Serviced Rowlands Shopping center, Kodak Park, General Motors Carburetor Plant.
- In 1956, it was replaced by the Eastern Expressway and closed as a public transit system.
- Served as a light duty freight line for General Motors until 1976
- Heavy Freight line for Gannet Papers until 1996



rpf00036.jpg Rochester Public Library Local History Division

Erie Canal Aqueduct 1923

Image From: <http://www.vintageview.org/>



rpf01624.jpg Rochester Public Library Local History Division

Building the Subway on the old Canal Bed

Image From: <http://www.vintageview.org/>



Rundel Memorial Library Building

Image From: <http://img234.imageshack.us/img234/2338/img3599rae0.jpg>

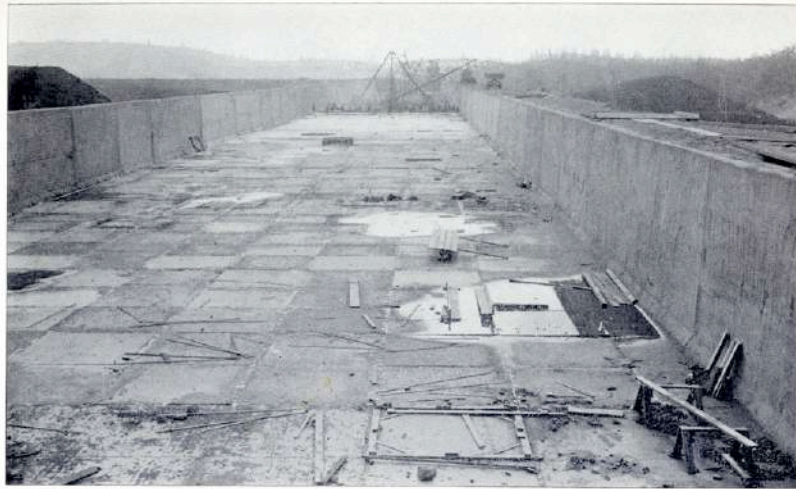
What's Worth Protecting

- Aqueduct

- Johnson and Seymour Millrace

- Subway itself

Aqueduct



BARRE CANAL, CONTRACT NO. 63.
View of the completed concrete trough upon the Irondequoit embankment.

-Canal Bed
Lock 63 in Bushnell Basin

Eric Canal Aqueduct 1908-



Aqueduct Today



Image From: Alissa Williams. My Hot Wife

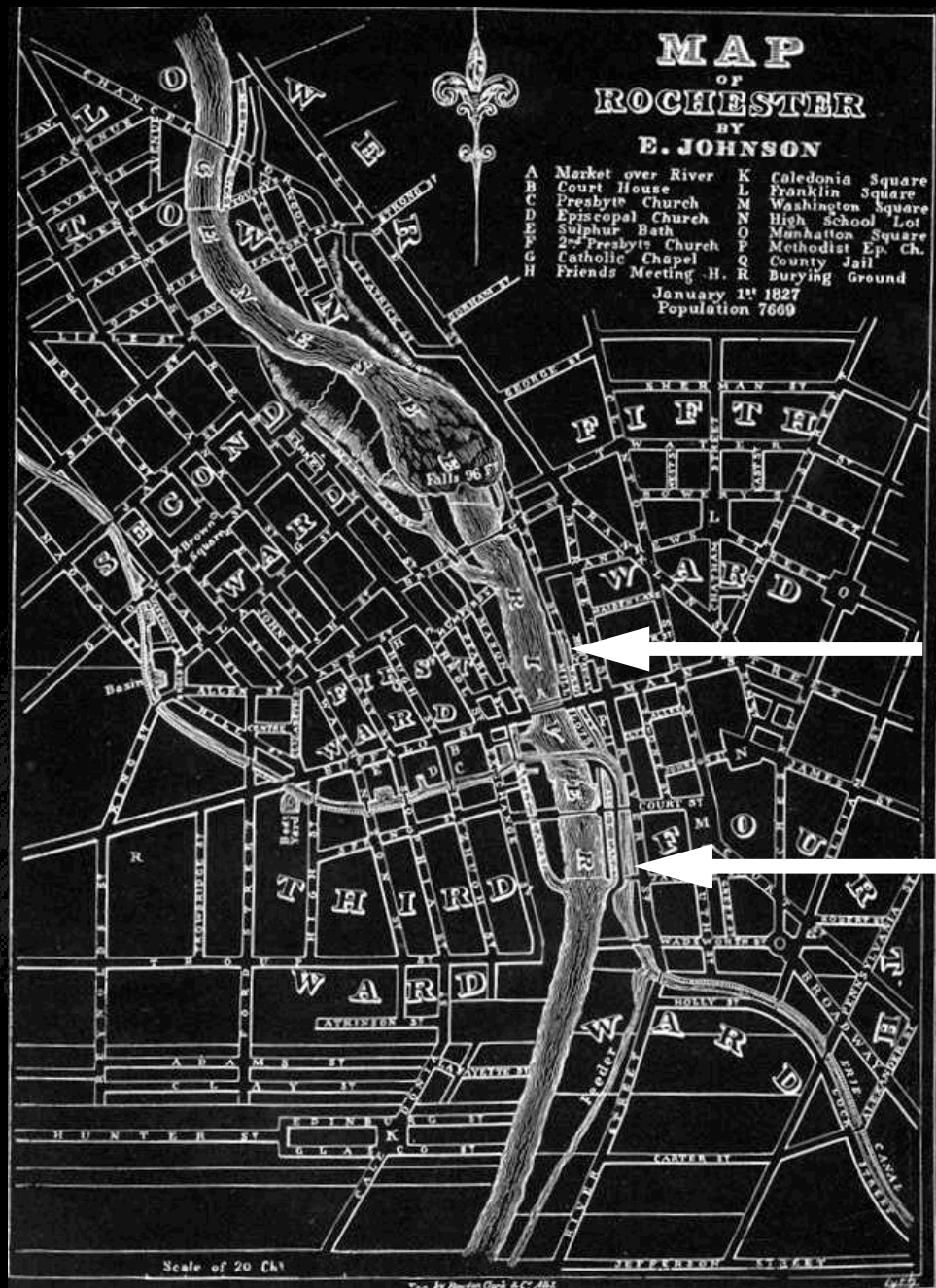
Johnson and Seymour Millrace



rpf00317.jpg Rochester Public Library Local History Division

Image From: www.rochester.lib.NY.US

**Helped to define the Takings Clause of the 5th amendment of the constitution.
McMillian V Lauer May, 1893**



**Johnson and
Seymour Millrace
fed most of
Rochester's mills in
1827**

Image From: www.eriecanal.org

MillRace Today

MillRace now sits under the Rundel –
Memorial Library Building



Image From: www.rochester.lib.NY.US

c0000531.jpg Rochester City Hall Photo Lab



Image From: images.cdn.fotopedia.com/flicker

Subway itself



-Commuters 1944

Image From: www.railroad.net

Electric Freight Motor 1940-

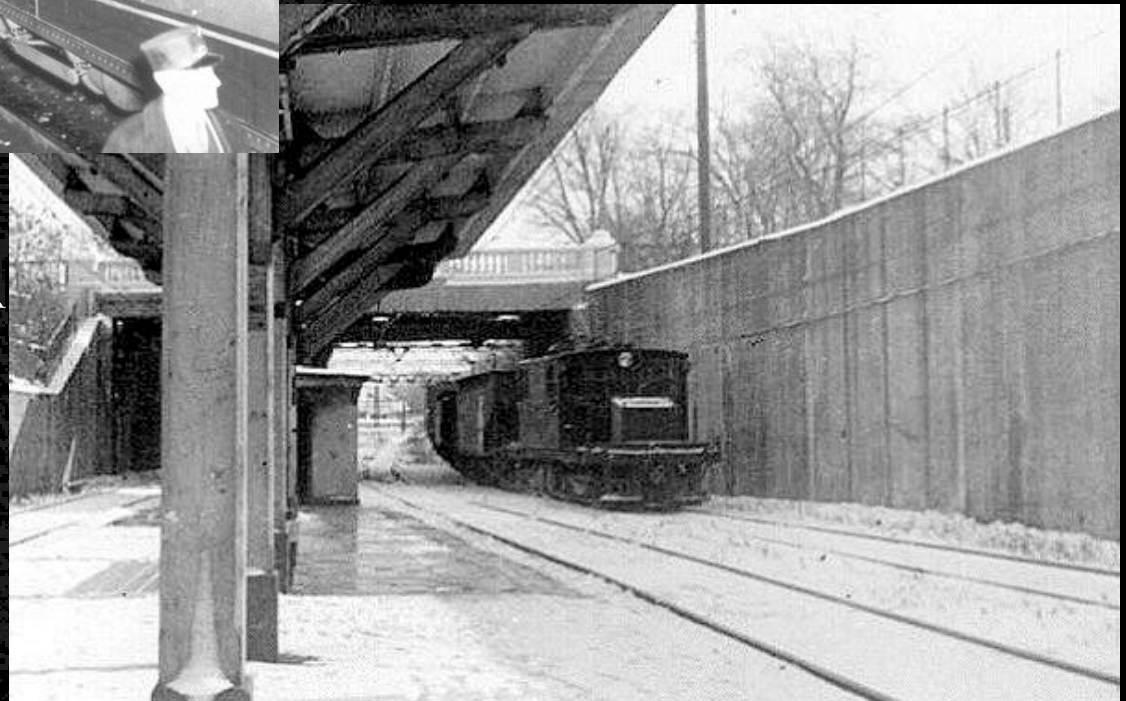


Image From: www.railroad.net

Subway itself



**Winton Road
Construction
1920's**

From the Albert R. Stone Negative Collection, Rochester Museum & Science Center, Rochester, N.Y.

Subway Today

Subway under Winton Road



Image From: Alissa Williams. My Hot Wife

Subway Today

Old Broad/River street
entrance-



Image From: www.Rochestersubway.org



-Service tunnel. Perhaps old millrace bypass.

Rochester Has Lost it's Way (reasons for preservation)



Image From: www.rochesternewspaper.com

-Former Mayor Bill Johnson's controversial policies have kept Rochesterians interest elsewhere but historical preservation.

-Panic for economic evaluation and stimulation at the expense of historical preservation

Public Audiences Interests' (as Rochestarians)

- Subway System it's self as a symbol of progress and a major part of Rochester's history**
- Old Millrace still remains and has help uphold the Constitution's 5th amendment and Takings Clause**
- We should set a trend for further preservation.**
- Tourism and generation of revenue**
- City Beautification**

Local context of public history institutions

Groups that may have interests

- Rochester Historical Society
- University of Rochester and Rochester Institute of Technology
- Rochester and Genesee Valley Railroad Museum
- Constitution Society
- New York Museum of Transportation
- Many Erie Canal historical groups (Too Many to List!)

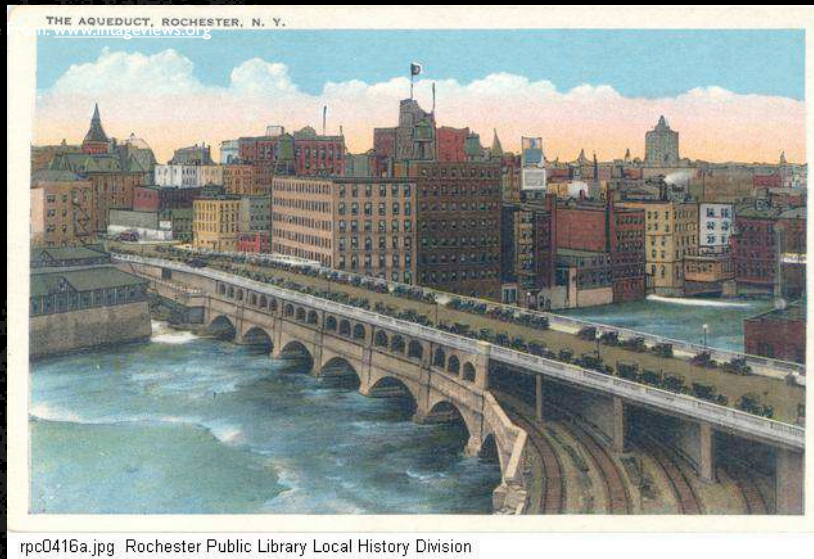
THE CONCEPT

- Two Areas
- Open Park and Underground guided tour
- Both will contain photographs and plaques full of information



Image From: www.vintageviews.org

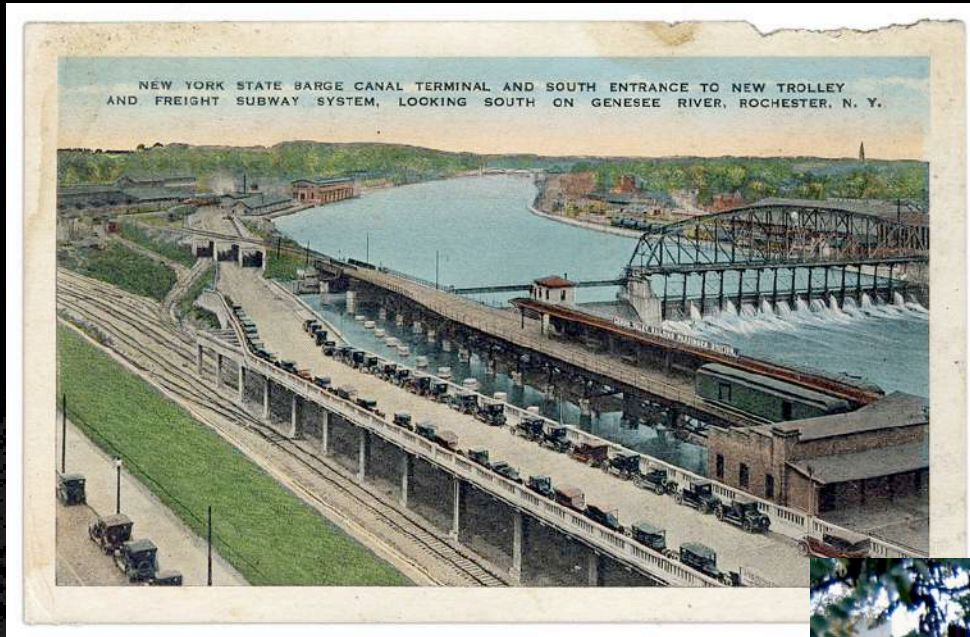
Image



rpc0416a.jpg Rochester Public Library Local History Division

Image From: www.rochester.lib.NY.US

Concept: Open Park



**-Rochester Subway Entrance
Opening Day 1927**

Image From: www.Rochestersubway.com

Imagine this!

The old River Street Bridge-

Upper Deck will allow river and city viewing-

Lower area will be a peaceful sanctuary allowing subway viewing-

Image From: Alissa Williams. My Hot Wife



Concept: Open Park

- Free to Public
- Hours comply with City ordinance
- We'll add some shrubs, railings, benches, and plaques.



Manhattan Square park

Use of old service house as ticket booth and info center

High Line Park NYC



Concept: Guided Living History Tour



- \$5 Per person**
 - Children free**
 - Tours every hour**
 - Limited Winter hours**
 - Open Weekends**
 - Free time exploration once the tour is over**
-
- Guided tours by historically accurate 1940's rail worker.**

Tour will include:

- Millrace
- Old Stops
- Aqueduct
- Underground housing



Rail Cars



Image From: www.railroad.net



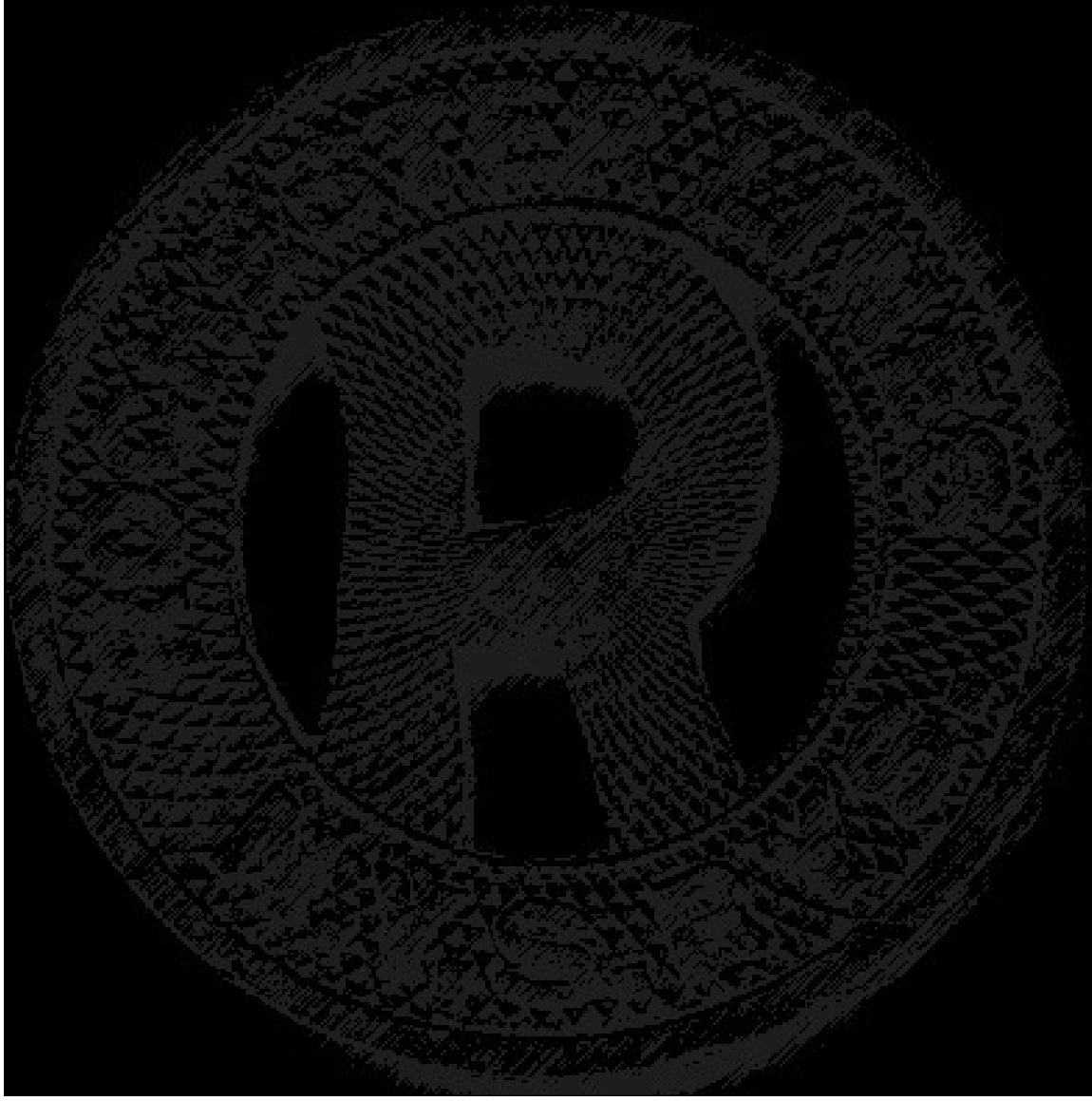
Image From: www.railroad.net

Identifying pros and theme in contrast to the text from class

- Hands on interactive experience provide greater depth of engagement**
- Power of Places**
- Living history (old rail worker providing tour)**



Epilogue



Opposition:

"I suggest that the old subway terminal be filled in with dirt before some smelly assed homeless dude sues the pants off the city for getting hurt down there. Maybe you can use the piles of rubble from the [old Kodak buildings](#) to fill it in. This city does not need another whacko liberal project to waste our tax dollars. We do not want your stupid bus station/ theatre. We do not want a fast fairy. And we do not want a subway. It was obsolete in 1954. It's only more obsolete now. Buy a S.U.V. if you need a ride."

"The last thing we need is another tax exempt museum. Fill it with dirt and be done with it."

*Love,
Christine*



Image From: www.RochesterSubway.com

Alert!

Demolition has begun



Image From: Alissa Williams. My Hot Wife



From the Albert R. Stone Negative Collection, Rochester Museum & Science Center, Rochester, N.Y.



Image From: www.RochesterSubway.com

- Total annihilation of the Winton Road section has taken place.
- Less than one mile of track still remains today
- The destruction of the subway has be described as a “Gimme”

More Pictures:



Image From: Alissa Williams. My Hot Wife



Image From: www.RochesterSubway.com

More Pictures:



Image From: www.RochesterSubway.com



Image From: www.Opacity.US



Image From: www.Opacity.US

