

EDGE OF THE WEDGE

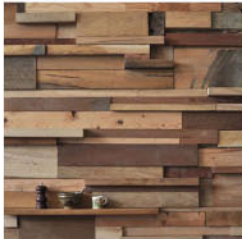
Arch Studio III: Adaptive
Thomas Button

Precedence:



<http://www.hulcor.com/products/detail/bifold-doors>

Replace overhead doors with Bi-fold Awning



<http://mechantdesign.blogspot.com/2011/07/reclaimed-wood-wall-diy.html>

Randomized wood plank facade



<http://homylicious.com/egress-window-wells/>

Light well



<http://www.greenroofs.com/content/articles/138-A-Comparison-of-the-3-Phases-of-the-High-Line-NYC-Part-II.htm#VCLgMfIdWSo>

Plank walking path

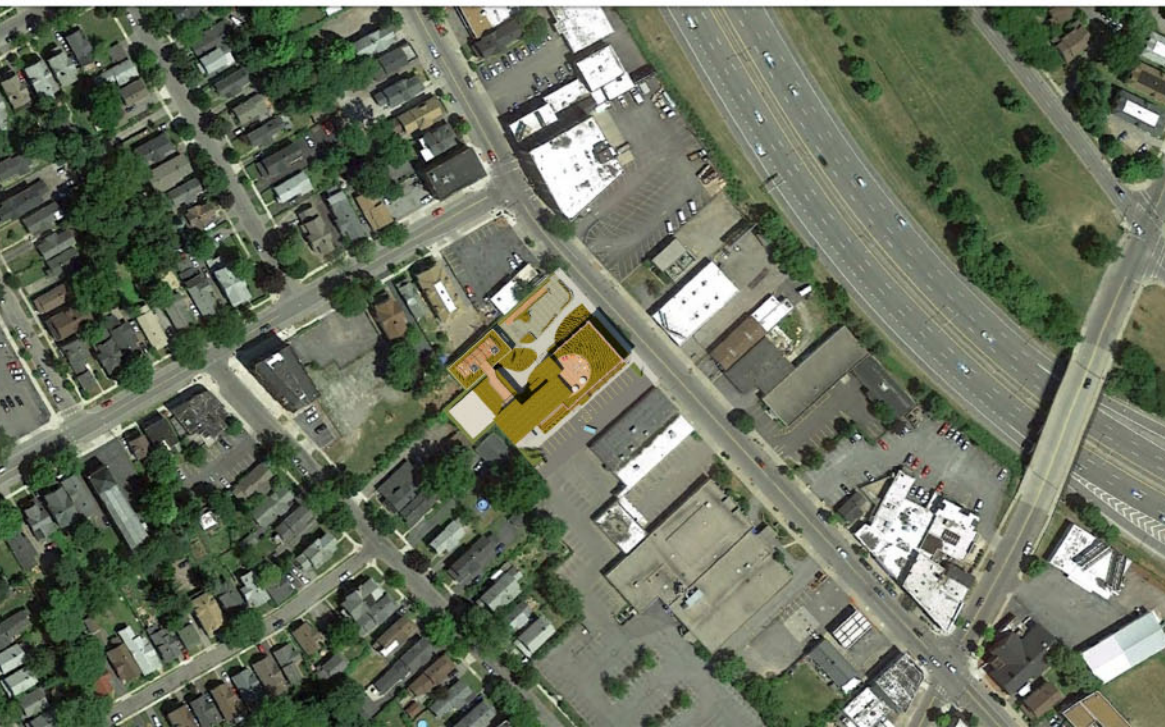
-maintain plank look of facade



3D-Perspective

Facade Concept

Site in context



Water Treatment

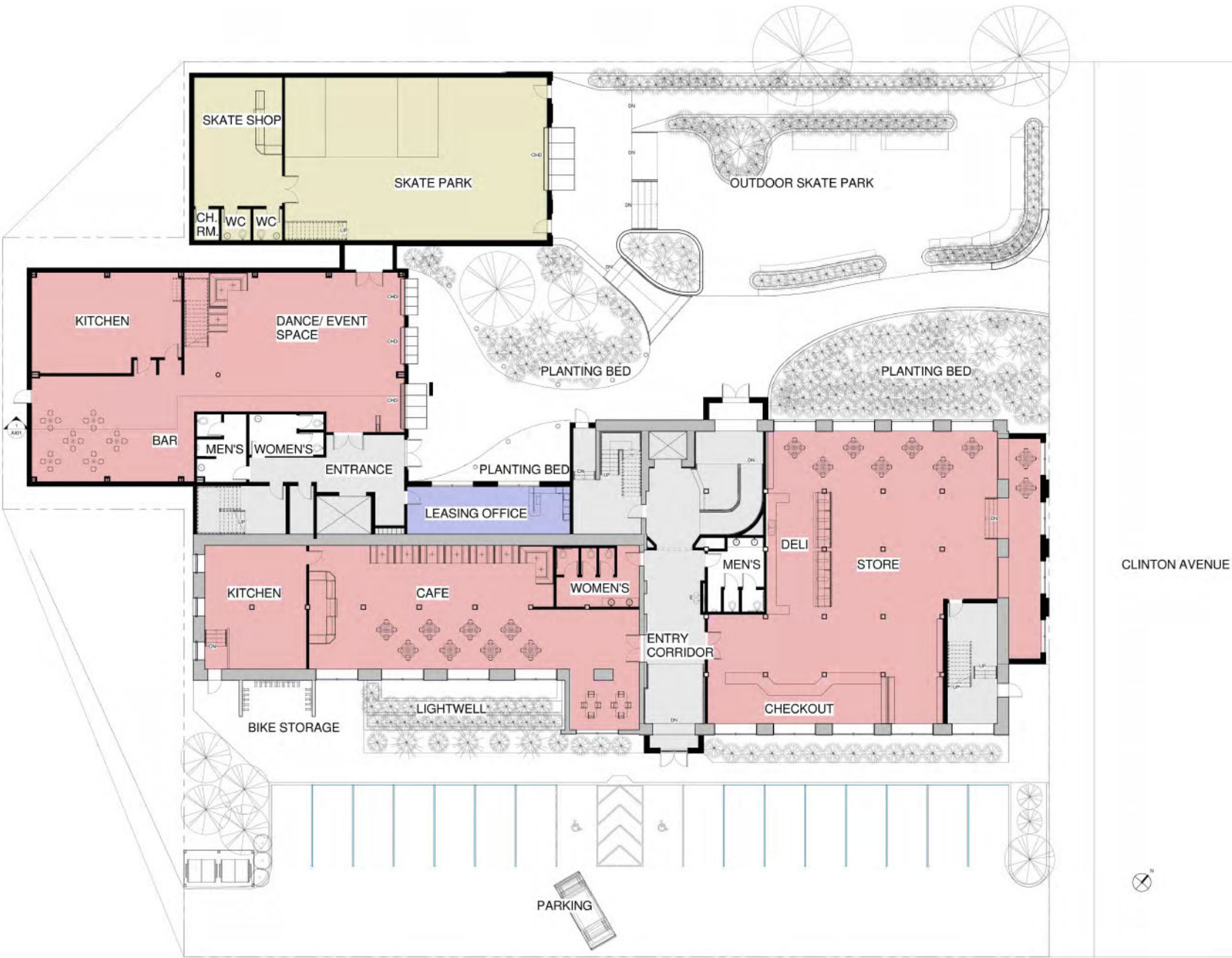


<http://www.pinterest.com/pin/516506650984041932/>

- LivingMachine

-Raised Beds for skating and seating

FLOOR PLANS



FIRST FLOOR PLAN

1/8" = 1'-0"

- Skate Park: 2,825 s.f.
- Restaurant: 2,450 s.f.
- Cafe: 2,700 s.f.
- Deli/grocery: 5,540s.f.
- Mezzanine: 2,350 s.f.
- Dance Floor:750 s.f.



Restaurant Floor Plan

1/8" = 1'-0"



Restaurant Section

1/8" = 1'-0"

Restaurant Passive Ventilation

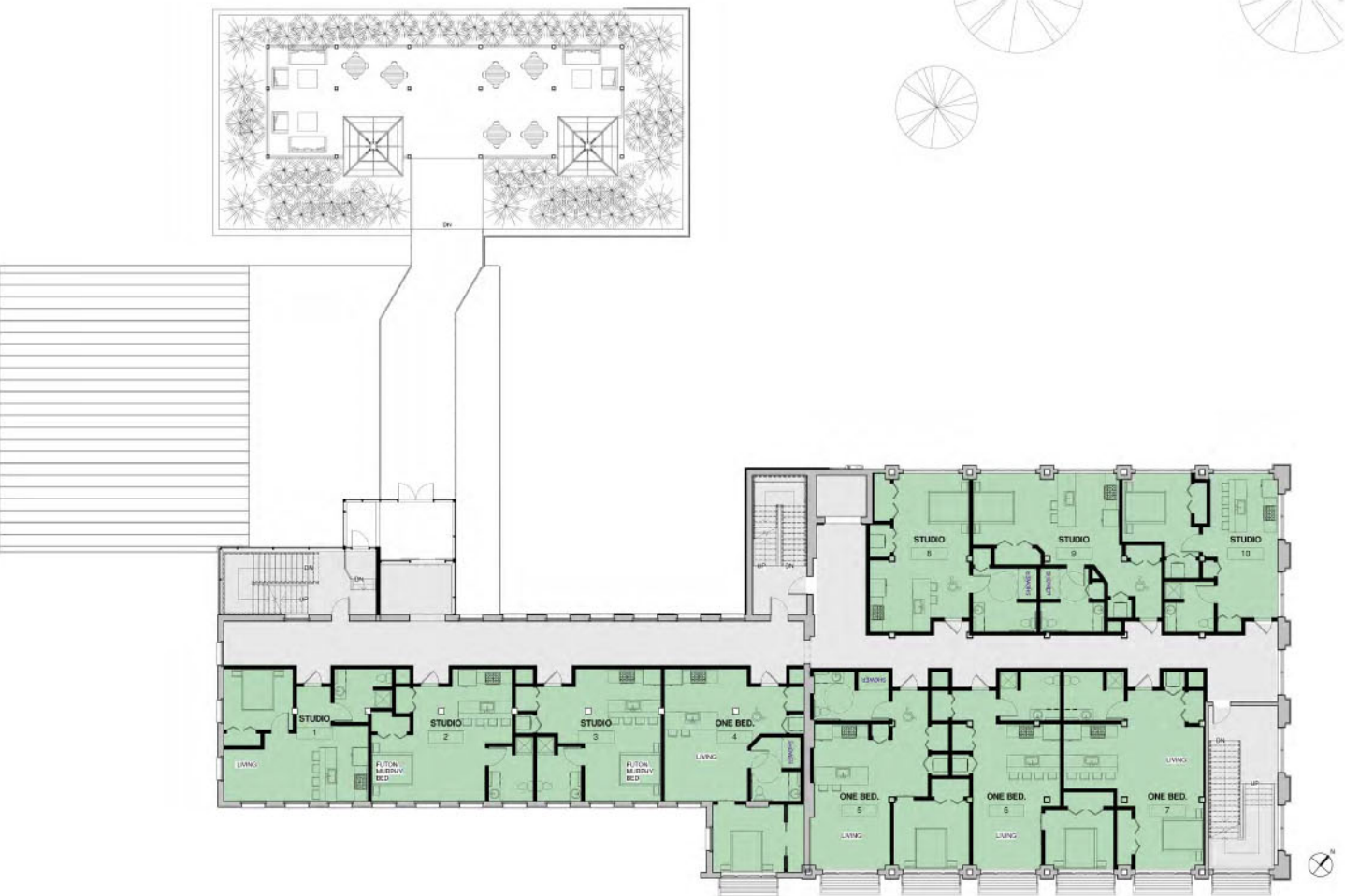
- Prevailing western wind
- Addition of fans to help lift air



SECOND FLOOR PLAN

1/8" = 1'-0"

Company square footage: 3,200 s.f. & 3,700 s.f.



THIRD & FOURTH FLOOR PLANS

1/8" = 1'-0"

6 Studio apartments per floor: 530 s.f.- 640 s.f. 2 ADA compatible

4 One bedroom apartments per floor: 700 s.f. - 850 s.f. 2ADA compatible



FIFTH FLOOR

1/8" = 1'-0"

⊗ Rooftop lounge

2,256 s.f.

RENDERINGS

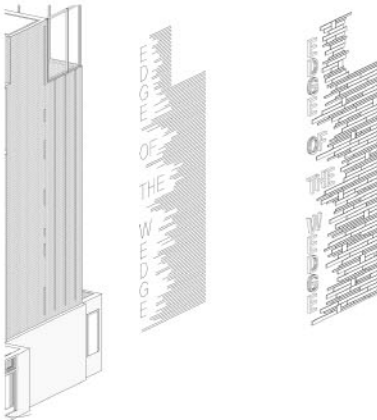


ELEVATIONS



EAST ELEVATION - STREET

1/8" = 1'-0"



FACADE CONSTRUCTION



NORTH ELEVATION

1/8" = 1'-0"



WEST ELEVATION

1/8" = 1'-0"



SOUTH ELEVATION

1/8" = 1'-0"